

# John Benjamins Publishing Company



This is a contribution from Belgian Journal of Linguistics 31:1  
© 2017. John Benjamins Publishing Company

This electronic file may not be altered in any way.

The author(s) of this article is/are permitted to use this PDF file to generate printed copies to be used by way of offprints, for their personal use only.

Permission is granted by the publishers to post this file on a closed server which is accessible only to members (students and faculty) of the author's/s' institute. It is not permitted to post this PDF on the internet, or to share it on sites such as Mendeley, ResearchGate, Academia.edu.

Please see our rights policy on <https://benjamins.com/content/customers/rights>

For any other use of this material prior written permission should be obtained from the publishers or through the Copyright Clearance Center (for USA: [www.copyright.com](http://www.copyright.com)).

Please contact [rights@benjamins.nl](mailto:rights@benjamins.nl) or consult our website: [www.benjamins.com](http://www.benjamins.com)

# A corpus-based analysis of pronoun choice in German relative clauses

Patrick Brandt and Eric Fuß

IDS Mannheim

This paper investigates the conditions that govern the choice between the German neuter singular relative pronouns *das* ‘that’ and *was* ‘what’. We show that *das* requires a lexical head noun, while in all other cases *was* is usually the preferred option; therefore, the distribution of *das* and *was* is most successfully captured by an approach that does not treat *was* as an exception but analyzes it as the elsewhere case that applies when the relativizer fails to pick up a lexical gender feature from the head noun. We furthermore show how the non-uniform behavior of different types of nominalized adjectives (positives allow both options, while superlatives trigger *was*) can be attributed to semantic differences rooted in syntactic structure. In particular, we argue that superlatives select *was* due to the presence of a silent counterpart of the quantifier *alles* ‘all’ that is part of the superlative structure.

## 1. Introduction

In German, relative clauses that modify a nominal element are typically introduced by a so-called *d*-pronoun that inflects for case (assigned in the relative clause) and agrees in gender and number with the head of the relative clause (cf. e.g. Duden 2016, 303):<sup>1</sup>

- (1) a. der Mann, **der** schläft  
the man that.MASC.NOM sleeps  
b. der Mann, **den** Peter getroffen hat  
the man that.MASC.ACC Peter met has

---

1. An alternative albeit less frequent and stylistically marked option consists in using inflected forms of the wh-determiner *welch-* ‘which’ to introduce relative clauses. *Welch-* has a similar distribution as *d*-forms and is more readily used in the written language.

- c. der Mann, **dem** Peter vertraut  
the man that.MASC.DAT Peter trusts
- d. die Frau, **die** Peter getroffen hat  
the woman that.FEM.ACC Peter met has
- e. das Auto, **das** Peter fährt  
the car that.NEUT.ACC Peter drives
- f. die Männer/Frauen/Autos, **die** Peter gesehen hat  
the men/women/cars that.PL Peter seen has

While the use of *wh*-forms is generally ruled out in connection with lexical head nouns (\**der Mann, wer...* ‘the man, who...’), certain neuter singular antecedents trigger relativization by means of the *wh*-pronoun *was* ‘what’ (cf. e.g. Duden 2016, 1047ff.; see Citko 2004 on light-headed relatives in Polish; Boef 2012, and Broekhuis and Keizer 2012, 407–420 on *wat* in Dutch), compare the following (non-exhaustive) list in (2) and the examples in (3):<sup>2</sup>

- (2) a. indefinites/quantifiers: *alles* ‘everything’, *eines* ‘one thing’, *vielen* ‘many things’ ...  
b. demonstratives: *das* ‘that’, *dasjenige* ‘that thing’, *dem* ‘that.DAT’, ...  
c. deadjectival nouns (conversions): *das Gute* ‘the good (thing)’, *das Beste* ‘the best’ etc.
- (3) a. **Alles, was** die Zuschauer dort sehen, ist Lug und Trug.  
everything what the spectators there see is lies and deception  
‘Everything that the spectators see there is lies and deception.’  
(NON13/JAN.07012 Niederösterreichische Nachrichten, 17.01.2013, NÖN Großformat, Ressort: Meinungen; PRO & KONTRA)
- b. **Das, was** wir machen, ist **das, was** uns gefällt.  
that what we make is that what us pleases  
‘What we do is what we like.’  
(BRZ07/JUN.06447 Braunschweiger Zeitung, 04.06.2007; „Das, was wir machen, ist das, was uns gefällt“)
- c. **Das Beste, was** Microsoft heute tun kann, ist, Yahoo zu kaufen.  
the best what Microsoft today do can is Yahoo to buy  
‘The best that Microsoft can do today is to buy Yahoo.’  
(HAZ08/NOV.01608 Hannoversche Allgemeine, 08.11.2008, S. 15; Microsoft lässt Yahoo abblitzen)

The exceptional use of a *wh*-pronoun as a relativizer raises a set of theoretical as well as empirical issues, two of which figure prominently in this paper. First, we

---

2. But note that in colloquial use, *was* may occur in connection with neuter singular antecedents as in (1e) (*das Auto, was...*), cf. e.g. Murelli (2012).

will address the question of whether the alternation between *das* and *was* must eventually be captured in terms of a list of exceptions (as is often the approach taken in traditional (descriptive) works, cf. e.g. Duden 2016, 1047ff.), or whether it is possible to identify a grammatical rule and/or more abstract property that unifies the contexts in (2). In addition, it will be shown that the elements that trigger relativization by means of *was* do not behave uniformly with respect to pronoun choice, giving rise to an amount of linguistic variation that has not been properly appreciated in earlier works. The examples in (4) and (5) show that deadjectival nouns and elements like *etwas* ‘something’ tolerate both *das*- and *was*-relatives and thus differ from both lexical nouns (which select *das*) and determiners/quantifiers (which select *was*).

- (4) Denn nicht **das Gute**, **das** ich will, tue ich, sondern **das Böse**, **das** ich nicht will, **das** führe ich aus. [...] Und dass es Kraft braucht, Mut, trotz diesem Widerstreit all **das Gute**, **was** wir zustande bringen, zu achten, zu verstärken. ‘Since I do not carry out the good things that I want, but rather the evil that I don’t want. [...] And that it requires strength and courage, despite this conflict, to heed and strengthen all the good things that [what] we accomplish.’ (SOZ06/FEB.03769 Die Südoschweiz, 18.02.2006; « Gutmensch » – ein Unwort)
- (5) Menschen, die einen Vortrag hören, wollen später etwas mit nach Hause nehmen. **Etwas**, **was** sie neu gelernt haben, **etwas**, **das** sie bereichert. People who listen to a talk want to take something home later on. Something that [what] they have newly learned, something that enriches them. (Bernd Wolfgang Lubbers. 2013. *Das etwas andere Rhetorik-Training oder “Frösche können nicht fliegen”*. Wiesbaden: Gabler Verlag, p. 97)

We will argue that the alternation between *d*- and relative clauses reflects categorial properties of the antecedent: Lexical nouns trigger relativization by means of *das*, while *was* is used as an underspecified default relativizer in contexts where *d*-forms (i.e., *das*) are not licensed. This approach reverts the markedness relations usually assumed for pronoun choice in relative clauses, and builds on ideas in Brandt and Fuß (2014) (see also Behaghel 1928 and, more directly, Wiese 2013). Here we go beyond the basic generalization and show that variation between *das* and *was* may be due to (i) structural/subcategorial differences between different types of deadjectival antecedents (only nominalized superlatives trigger *was* across the board), and (ii) semantic/pragmatic factors conforming with more general patterns typical of conversational implicatures (typically in cases where pronoun choice is underdetermined by the grammar). To isolate the various factors governing the alternation between *d*- and *wh*-forms, we iteratively reduce the

domain where variation obtains via subtraction of predictable classes of cases until virtually no free variation remains.

The paper is organized as follows: Section 2 introduces the idea that *was* functions as a default relativizer in present-day German, developing and modifying earlier theoretical proposals (Brandt and Fuß 2014). Section 3 discusses variation between *das* vs. *was* in connection with deadjectival nouns. Section 4 shows that in cases where the choice of relative pronoun is not determined by the grammar, the alternation between *das* and *was* can be used to achieve certain semantic/pragmatic effects. Section 5 provides a concluding summary.

## 2. *was* as a default relativizer

This section presents a range of basic facts concerning the distribution of *das* and *was* as relativizers and an analysis that builds on previous work (Brandt and Fuß 2014) where we argue that the absence/presence of a lexical-nominal antecedent is the most important factor governing pronoun choice in relative clauses with a neuter singular antecedent. This specific approach is supported by corpus studies that investigate the impact of the presence vs. absence of a lexical head noun on pronoun choice in relative clauses, using the COSMAS web-interface to the *Deutsches Referenzkorpus* (DeReKo, <http://www.ids-mannheim.de/cosmas2>). Table 1 lists the aggregate results of the relevant searches, which already show that the presence of a lexical head noun overwhelmingly leads to relativization by means of a *d*-pronoun, whereas *was* predominates in the absence of a lexically nominal antecedent (see below for some discussion of the exceptional cases).

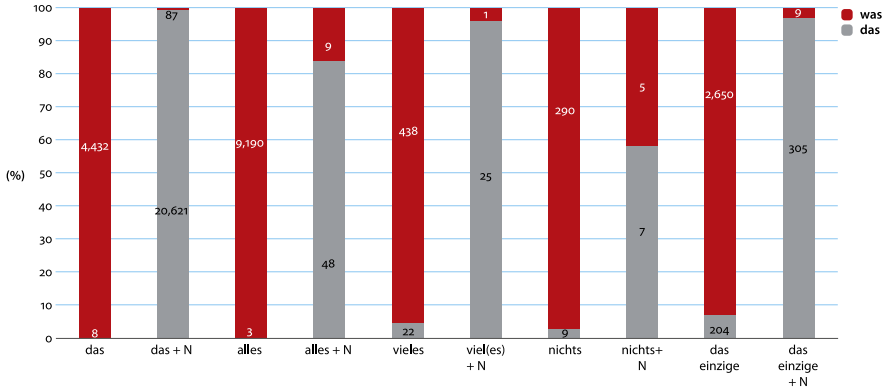
Even more revealing is Figure 1, which displays the impact of a lexical head noun in combination with selected elements that usually (i.e., if they act as the sole antecedent of the relative clause) trigger the relativizer *was* (determiner/demonstrative: *das* ‘the, that’; indefinites/quantifiers: *alles* ‘all, everything’, *vieles* ‘many, much’, *nichts* ‘nothing’; deadjectival nouns: *das einzige* ‘the only thing’). To pick one example, let’s take a closer look at the numbers given for the quantifying element *alles* ‘all’. First, it becomes clear that *alles* by itself quasi-obligatorily leads to a *was*-relative (compare the third column from the left). However, when a lexical noun is added to the quantifier (e.g., *alles Geld/Wasser/Öl* ‘all money/water/oil’), relativization by means of a *d*-pronoun becomes the norm (the amount of *das*-relatives is marked by light grey).<sup>3</sup>

---

3. *Alles* combines with mass nouns (as well as deadjectival nouns, cf. below) but not count nouns; a separate corpus study showed that the mass/count distinction hardly has an impact on the choice between *das* and *was* (pace e.g. Curme 1922). See below for marginal cases where *was* is used in this context.

**Table 1.** Distribution of *das/was* dependent on the presence of a lexical head noun (aggregate numbers,  $p < 2.2e-16$ , Cramér's  $V = 0.965$ )

	<i>Das</i>	<i>Was</i>
Antecedent without N	678	17.006
Antecedent with N	36.796	152



**Figure 1.** Impact of the presence/absence of N with elements that require the relativizer *was* (DeReKo, Connexor-Teilarchiv, June 2014).<sup>4, 5</sup>

Based on these findings, Brandt and Fuß (2014) arrive at the following generalization concerning the licensing conditions for a relative *d*-pronoun in the context neuter singular:

(6) Generalization: Relativization by means of *das*

$$N_{[\text{neuter singular}]} \rightarrow \textit{das}$$

According to (6), the presence of a lexical head noun is the decisive factor determining the choice between *das* vs. *was* in relative clauses. A related insight has already been reached by Behaghel (1928:725f.).

In what follows, we will first present an analysis of the findings reported so far before we take a closer look at cases beyond the basic generalization in (6) where *das* and *was* covary in one and the same linguistic context.

4. The rare examples of the type *nichts+N* all involve deadjectival nouns (*nichts Gutes/Schönes* ‘nothing good/beautiful’ etc.), which allow relativization by means of *was* (see below for details).  
 5. The distinction between restrictive and non-restrictive relative clauses does not seem to influence the choice between *das* and *was* (in contrast to Dutch, cf. Broekhuis & Keizer 2012).

## 2.1 Analysis: Inherent gender features trigger *das*

In this section, we present a slightly modified version of the analysis developed in Brandt and Fuß (2014), which shares with the original approach the intuition that the choice between *d-* and morphology is determined in the course of the syntactic derivation, depending on whether the relativizer enters into an agreement relation with a lexical head noun (Wiese 2013, see also Boef 2012 on Dutch). The updated account, which is fleshed out in the sections immediately below, is based on the following set of core assumptions:

- (7) a. (Inherent) gender is the defining characteristic of lexical nouns.
- b. The more specified phonological exponent *das* is used if the relativizer picks up a gender feature via agreement with a lexical nominal antecedent.
- c. Elsewhere, *was* is inserted (as a default relativizer).

### 2.1.1 Syntax

We take it that relative pronouns (RP) enter into a syntactic agreement relation with the head of the relative clause, which serves to determine the RP's feature content. Adopting fairly standard assumptions, we take it for granted that RP contains a category feature [D], an operator feature [Op], and a set of phi-features (following a widely adopted practice, features that await valuation in the course of the syntactic derivation are marked as 'uF'). Accordingly, the feature content of a relative pronoun can be characterized as follows:<sup>6</sup>

- (8) RP [D, Op, Person, Number, uCase, uGender]

Case is assigned internal to the relative clause, while the gender feature is determined/valued via agreement with the head noun:<sup>7</sup>

- (9) head [<sub>CP</sub> RP<sub>i</sub> [<sub>C'</sub> C [<sub>TP</sub> ... t<sub>i</sub> ... ]]]



6. [person] might be left unspecified if it is assumed that third person expresses the absence of positively specified person features (Benveniste 1950, 1966). Number seems to play a special role: The finite verb of the RC agrees in number with the RP, which suggests that the RP is inherently specified for number. However, the RP also agrees in gender and number with the head noun, which suggests that number must be checked by the relevant agreement operation; thus, agreement not only involves feature valuation, but also matching of already valued features.

7. See Zeijlstra (2012, 2013) for the idea that agreement involves a relation between a probe and a higher, c-commanding goal. Cf. Heck & Cuartero (2011) for an alternative mechanism based on downward agree that accomplishes agreement between head noun and relative pronoun/relative clause.

Focusing on the context [neuter singular, nominative/accusative] where variation between *d-* and forms obtains (*das* vs. *was*), there are two possible outcomes of the syntactic derivation, dependent on whether the RP acquires a gender feature from a lexical head noun:<sup>8</sup>

- (10) a. [D, Op, -pl, -obl, -obj/+obj, Gender: -masc, -fem]  
 b. [D, Op, -pl, -obl, -obj/+obj, Gender: \_\_\_ ]

We propose that the choice between *d-* and pronouns can be accounted for in terms of the difference between the feature structures in (10) in combination with a set of (fairly standard) assumptions concerning the phonological realization of syntactic terminal nodes and the featural specifications of the vocabulary items involved.

### 2.1.2 *Spelling out RP*

In a realizational model of grammar where bundles of abstract morpho-syntactic features are supplied with phonological exponents post-syntactically (cf. e.g. Halle and Marantz 1993), the distribution of *das* vs. *was* can be captured by assuming that *d-* and forms are linked to vocabulary items that differ in specificity and compete for realizing the feature structures in (10). More precisely, we propose that the vocabulary items linked to (neuter) *d-* forms are generally more specified than those linked to (neuter) forms in that only the former carry gender specifications (and, presumably, a categorial D-feature):

- (11) a. [D, +Op, -obl, -masc, -fem] ↔ /das/  
 b. [+Op, -obl] ↔ /vas/

In other words, in addition to structural case (nom/acc), relative *das* is specified for an operator feature [Op], a category feature and neuter gender; in contrast, *was* is a pure operator that carries only a subset of the feature content associated with the competing *d-* form *das* (cf. e.g. Bayer and Brandner 2008, Grewendorf 2012; cf. Brandt and Fuß 2014 for further discussion concerning the role of case). Under the standard assumption that the insertion of phonological exponents is governed

---

8. The feature structures in (10) assume decomposition of case features (basically following Bierwisch 1967; cf. Blevins 1995 and Wiese 1999 for slightly revised systems) based on the features [±oblique, ±object]:

- (i) a. nominative: [-obl, -obj]  
 b. accusative: [-obl, +obj]  
 c. dative: [+obl, +obj]  
 d. genitive: [+obl, -obj]





- (15) Von *disciplina* wird der Begriff *discipulus* hergeleitet, was soviel wie  
 from *disciplina* is the notion *discipulus* derived what so much as  
 Lehrling oder Schüler bedeutet.  
 apprentice or pupil means  
 (A09/FEB.05129 St. Galler Tagblatt, 18.02.2009, S. 36; Geschichte prägt die  
 Disziplin)

### 2.1.3 *Some further consequences of the analysis: wh-forms vs. d-forms*

At this point, let us briefly highlight the findings reached so far and discuss a couple of theoretical implications, focusing on the different licensing conditions for *d*- and pronouns, and the status of gender. The relativization facts surveyed so far suggest that the insertion of *d*-forms as relativizers is dependent on the presence of a syntactic agreement relation between the head noun and the RP, which leads to a valuation of [uGender] on the RP and serves to establish strict coreference between these two elements (traditionally marked by coindexing). As a result, gender on *d*-pronouns is grammatical in nature (i.e., non-interpretable, resulting from agreement). In contrast, forms such as *was* are used in cases where no agreement relation is established between the RP and the head of the relative clause (i.e., RP's feature content is not affected by feature valuation in the syntax).<sup>9</sup> More precisely, *was*, which lacks gender specifications, can be regarded as the spell-out of unvalued gender features. Thus, we assume that neuter gender can result either from negative values for [masculine] and [feminine] or from the absence of gender valuation altogether (cf. e.g. Harley and Ritter 2002). Furthermore, there are reasons to believe that the absence of [gender] is interpreted as [-animate/

9. Further evidence suggesting that the connection between relative *was* and its antecedent is less tight than between a *d*-form and its antecedent comes from the observation that *was* can be construed with different kinds of antecedents, leading to systematic ambiguities (see also Holler 2005:96):

- (i) Adrian hat alles gekauft, was Anton auch hat.  
 Adrian has everything bought what Anton also has
  - a. 'Anton has bought everything, too.' (reference to the matrix predicate/VP)
  - b. 'Adrian has bought everything that Anton already owns.' (reference to *alles*)
- (ii) Adrian will in die Bretagne fahren, was Anton auch will.  
 Adrian wants to the Brittany go what Anton also wants
  - a. 'Adrian wants to go to Brittany, and Anton also wants that Adrian goes to Brittany' (reference to the matrix proposition/IP)
  - b. 'Adrian wants to go to Brittany, and Anton wants to go to Brittany, too.' (reference to the matrix predicate/VP)

To account for the 'sloppy' behavior of *wh*-relativizers, Brandt & Fuß (2014, 2016) assume that coreference between a *wh*-pronoun and a possible antecedent is established by pragmatic mechanisms.

human] at the interface to the semantic component. In this way, the lack of an agreement relation that determines gender on the RP is linked to the observation that gender distinctions have a semantic effect with *wh*-pronouns: The absence of an antecedent with specified gender (and number) features frees up *wh*-forms to code a semantic difference (as opposed to purely grammatical gender found with *d*-pronouns), namely, the difference between persons ([+gender], *wer*) and non-persons (absence of [gender], *was*), just as in interrogatives (cf. Wiese 2013).

### 3. Beyond the basic generalization

#### 3.1 Distributive quantifiers: Cases of noun ellipsis

Certain indefinite pronouns or quantifiers like *jedes* ‘each’, *eines* ‘one thing’ or *keines* ‘none’ appear to trigger relativization by means of *das* independent of the absence/presence of a lexical noun; the dendogram in Figure 2, which is based on a heat map using normed frequencies, clearly shows that regarding the ratio of *das/was*, they cluster with antecedents featuring a lexical nominal.

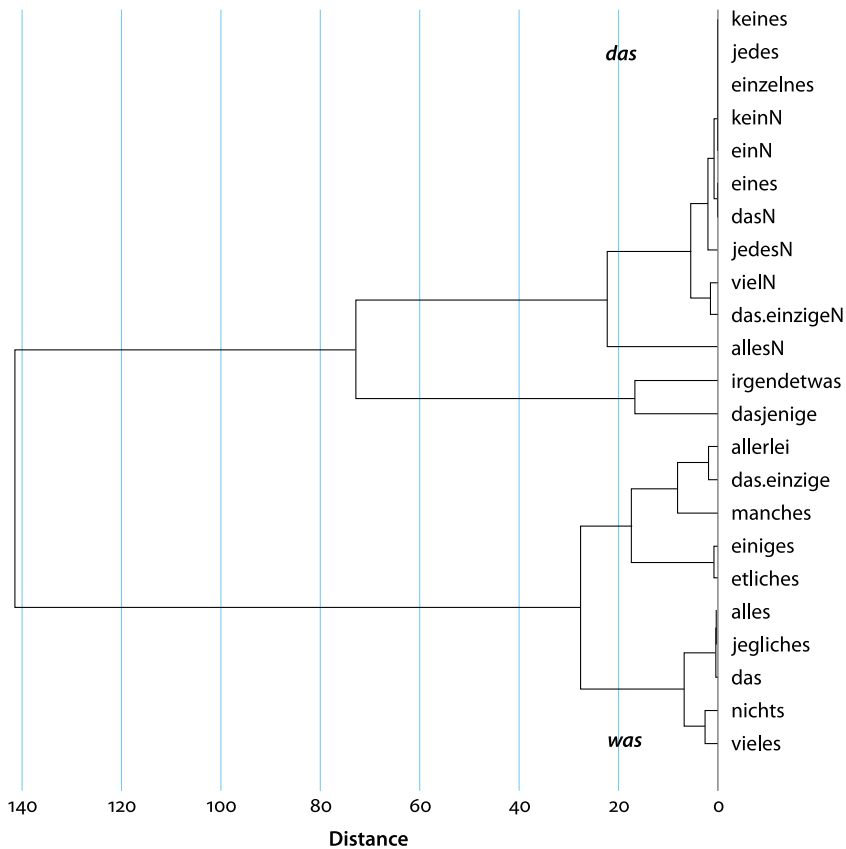
Zooming in, we observe that combining a lexical nominal with *jedes*, *eines* or *keines* only very slightly strengthens the already strong tendency of these elements to trigger relativization by means of *das*, cf. Figure 3.

When we look at the cases of ‘naked’ *jedes/eines/keines* followed by *das*, we observe that virtually without exception, the lexical restriction of the quantifier corresponds to an element mentioned in the immediately preceding discourse context as in (16). In other words, *jedes/eines/keines* anaphorically refer to a discourse-given antecedent.

- (16) Ein richtiges Fußballspiel. **Keines**, *das* ich nur im Fernsehen anschauen kann  
[...]  
‘A real football match. Not one that I can only watch on TV.’  
(BRZ10/MAR.05983 Braunschweiger Zeitung, 12.03.2010)

There are different ways of accounting for the coreferential interpretation of elements such as *keines* in examples like (16). In Brandt and Fuß (2014), we regard such examples as cases of noun ellipsis (see also Duden 2016, 957); specifically, we argued that *jedes/keines/eines* always select for a lexical noun that may remain silent to the extent that its reference can be reconstructed from the discourse context, as sketched in (17):

- (17) ...  $N_i$ ... [ *jedes/eines/keines*  $N_i$  [<sub>SRel</sub> *das* ...] ]



**Figure 2.** Dendrogram of selected antecedents based on the ratio of *das*/*was* (normed frequencies).

As a reviewer points out, however, the form *keines* featuring strong adjectival inflection is unexpected under the ellipsis account as it differs from the form we observe in connection with an overt head noun (*\*keines Fußballspiel* vs. *kein Fußballspiel* ‘no football match’). This might suggest that no ellipsis takes place but that *keines* itself is (pro)nominal. Interestingly, it is exactly when a noun is locally invisible that the quantifier carries strong inflection, e.g. in connection with so-called split noun phrases where the quantifier is stranded by the fronted head noun:

- (18) Geld habe ich [ keines/\*kein \_\_\_ ] mehr.  
 money have I none anymore

As a general rule, the inflectional features of noun phrases have to be marked at least once (Duden 2016, 955); marking can appear on the article, an adjective, or

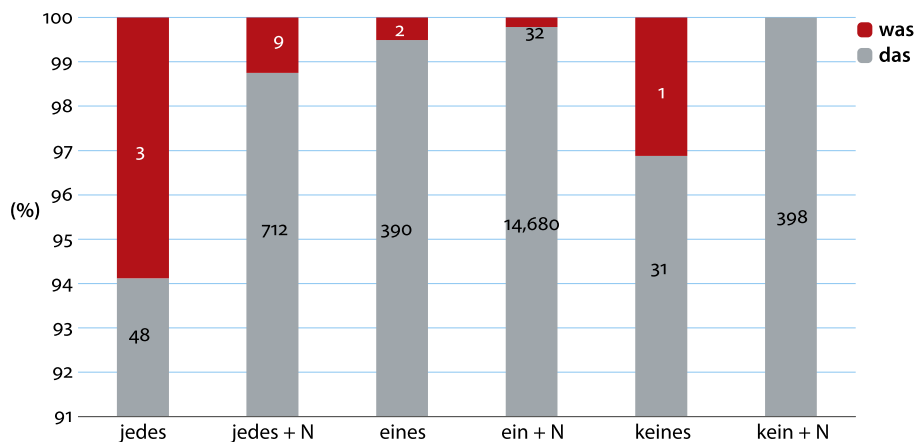


Figure 3. *D*-elements that always trigger *das* (DeReKo, Connexor-Teilarchiv, June 2014).

the head noun. Only if the noun phrase is realized discontinuously can the strong marking appear twice:

- (19) a. [Grüner Spargel] ist [keiner \_\_] mehr da.  
 green-NOM.SG.MASC asparagus is none-NOM.SG.MASC anymore there  
 'There is no green asparagus anymore.'
- b. Ist [kein-Ø/\*-er grün-er Spargel] mehr da?  
 is no.NOM.SG.MASC green-NOM.SG.MASC asparagus anymore there

To the extent that the local absence of a noun is compensated for by the strong inflection on the quantifier, the quantifier itself may assume a pronominal function. With forms like *kein-*, *ein-* or *jed-*, the singular endings (*-er* 'masc.' *-es* 'neut.', *-e* 'fem.') unambiguously signal gender, which is the defining characteristic of lexical nouns. In contrast, *all-* does not signal gender distinctions in the same manner as there is only a single neuter singular 'pronominal' form (*all-er* 'all-nom.sg.masc' or *all-e* 'all-nom.sg.fem' occur only together with lexical nouns). As is well-known, gender agreement is a necessary ingredient to syntactically determined anaphoric reference. *Alles* (and *nichts* 'nothing') cannot serve as an anaphor since it lacks gender distinctions (but is always neuter). In contrast, *jedes/eines/keines* exhibit the full gender paradigm; these elements may thus be identified with a nominal antecedent. We thus expect relativization by means of *d*-forms no matter where the gender features come from (from a silent/elided noun under agreement or directly from the lexicon).

In other respects as well, *alles* lacks the specifically nominal quality of *eines* or *keines*; note, thus, that it at best very marginally allows for (post-nominal) attributive genitives, which regularly attach to N only.

- (20) a. \*<sup>?</sup>alles des Präsidenten  
 all of-the president  
 b. jedes des Präsidenten  
 each of-the president  
 ‘each of the president’s (children, horses...)’

### 3.2 Deadjectival nouns

As we noted above, deadjectival nouns that are derived by conversion seem to be compatible with both *das* and *was*, cf. the following statement in the Duden grammar (2016, 1049): “Die Form *was* steht überwiegend bei Bezug auf substantivierte Adjektive mit Genus Neutrum. Dabei kommt ebenfalls die Form *das* vor.” [The form *was* ‘what’ prevails with reference to nominalized adjectives in the neuter gender. The form *das* ‘that’ is also possible. *our translation*]. However, a corpus study carried out in the DeReKo (W-Gesamt, November 2014) shows that the situation is actually even more complex. We propose that three classes of cases must be distinguished along the lines in (21).

- (21) Distribution of *das/was* with deadjectival nouns (neuter singular):  
 a. anaphoric/elliptical readings ⇒ *das*  
 b. (non-anaphoric) nominalized positives (*das Gute* ‘the good (one)’) ⇒ *das* & *was*  
 c. (non-anaphoric) nominalized superlatives (*das Beste* ‘the best’): ⇒ *was*

These observations bear on the more general theoretical question whether ‘nominalized’ adjectives come with an elided N-head or are categorially nominal themselves (or may instantiate a mix of both options), cf. e.g. Kester (1996) vs. Sleeman (2013). In the following subsections, we turn to the respective classes one by one.

#### 3.2.1 Anaphoric/elliptical readings

To the extent that a nominal restriction can be reconstructed from the context, no variation is observed and *das* is used without exception; (22) gives another relevant corpus example.

- (22) Das bisher bestehende Kraftwerk ist bekanntlich völlig überaltet [...] Das neue, das Ende 1994 fertiggestellt sein soll, wird nach dem neuesten Stand der Technik errichtet.

As is well-known, the existing power plant is completely outdated [...] The new one, which will be completely by the end of 1994, will be built using the latest technology.

(N93/MAR.08195 Salzburger Nachrichten, 05.03.1993; Heizkraftwerk Nord 88 Mill. S teurer)

Like in the case of *jedes/eines/keines* discussed above, we propose that the use of *das* is triggered here by a silent lexical head noun, as sketched again in (23).

(23) ... *Kraftwerk*... [*Das neue Kraftwerk* [<sub>SRel</sub> *das* ...]]

Elliptical readings thus do not present relevant cases altogether: in the present context, the adjectives accompany lexical if silent head nouns that trigger relativization by means of *das*.

### 3.2.2 Non-elliptical readings: Nominalized positives

We do observe variation in the context of non-elliptical readings of nominalized positives, cf. (24a) vs. (24b).

- (24) a. oft sei es **das Neue**, was den Anstoß gebe, eingefahrene Fahrwasser endlich zu verlassen  
 ‘Often it is the new [ideas] that [what] motivate people to finally leave the beaten track.’  
 (RHZ97/JUL.03252 Rhein-Zeitung, 05.07.1997; Gute Ideen sind in der Tat gefragt)
- b. **Das Neue**, das sich aus solchen Veränderungen ergeben könnte, ist vielerorts allerdings noch nicht in Sicht.  
 ‘In many places, the new [things] that could result from such changes are not visible yet.’  
 (T92/JUN.24015 die tageszeitung, 24.06.1992, S. 16; Zensur in der neuen Weltunordnung)

The quantitative analysis shows that *das* is actually more frequent than *was* in this context:

We propose to attribute the observed variation to the categorial status of nominalized positives that can be characterized as a mix of nominal as well as adjectival properties. On the one hand, nominalized adjectives have a distribution typical of nouns; specifically, they combine with determiners or determiner-like elements, cf. (25), and they allow adjectival modification exhibiting the agreement patterns otherwise found with nominal heads, cf. (26).

- (25) a. *das/vieles/alles Gute*  
 the/much/all good (weak inflection)
- b. *ein/viel/nichts Gutes*  
 a/much/nothing good (strong inflection)
- (26) a. *das vermeintliche/einzige/vollständige Neue*  
 the alleged/only/complete new (one)
- b. *das vermeintliche/einzige/vollständige Opfer*  
 the alleged/only/complete victim/sacrifice

**Table 2.** *das* vs. *was* with nominalized positives (non-elliptical readings)

	<i>Das</i>	<i>Was</i>
<i>Gute(s)</i> 'good'	490 (74%)	172 (26%)
<i>Schöne(s)</i> 'beautiful'	132 (73.7%)	47 (26.3%)
<i>Neue(s)</i> 'new'	502 (74.2%)	175 (25.8%)

On the other hand, nominalized positives show adjectival behavior. They alternate between strong and weak inflection, cf. again (25), they allow adverbial modification cf. (27), and they retain the case-assigning properties of the adjectives that form their base, cf. (28) with dative case on the nominal complement.

- (27) a. *das* sehr/vermeintlich/einzig/vollständig Neue  
           the very/allegedly/only/completely       new (one)
- b. \**das* sehr/vermeintlich/einzig/vollständig Opfer  
           the very/alleged/only/complete         victim/sacrifice
- (28) *die*    *dem*    König Treuen  
           the.PL the.DAT king   faithful.PL

In sum, the variation between *das* and *was* in the case of nominalized adjectives likely is a consequence of their mixed lexical status between nouns and adjectives (cf. Fuß 2017 for further discussion). This approach is in line with proposals by Sleeman (2013) or Alexiadou (2011, 2015) who argue that the 'mixed' categorial properties of certain deadjectival nouns follow from the presence of both nominal and adjectival functional structure in the internal make-up of these forms (giving rise to the impression of different degrees of 'nouniness' at the surface). Alternative analyses that posit the presence of silent head noun (cf. e.g. Kester 1996a,b) face a number of problems. For example, they cannot account for the relativization facts (if a silent noun were always present, we would expect relativization by means of *das* across the board), and do not provide an explanation for the observation that in contrast to lexical nouns, gender is not merely a grammatical category, but has a semantic effect: neuter forms refer to abstract, non-animate entities, while masc./fem. forms refer to persons:

- (29) *das*        *Schöne*   vs. *der/die*        *Schöne*  
           the.NEUT beautiful    the.MASC/the.FEM beautiful (= a beautiful person)

### 3.2.3 *Non-elliptical readings: Nominalized superlatives*

Finally, nominalized superlatives overwhelmingly trigger relativization by means of *was* (in non-elliptical readings), cf. the example in (30) and the figures in Table 3 (cf. as well Cutting 1902).



- (30) Abschließend gibt Angela Merkel ihrer Überzeugung Ausdruck, „dass der Blick von oben auf die Erde **das Schönste** ist, was es gibt.“  
 ‘Concluding, A.M. expresses her conviction that the view of earth from above is the most beautiful [thing] that [what] exists.’  
 (B06/JUL.52314 Berliner Zeitung, 21.07.2006, Ressort: Blickpunkt; „Wie klappt’s mit dem Schlafen?“)

**Table 3.** *das* vs. *was* with nominalized superlatives (non-elliptical readings)

	<i>Das</i>	<i>Was</i>
<i>Beste(s)</i> ‘best’	413 (6.6%)	5838 (93.4%)
<i>Schönste(s)</i> ‘most beautiful’	86 (9.9%)	783 (90.1%)
<i>Neueste(s)</i> ‘newest’	11 (16.9%)	54 (83.1%)

Following Bobaljik (2012), we assume that superlatives decompose into a part meaning ‘more’ (= a comparative head) and a component meaning (roughly) ‘than all (others)’ (= a ‘superlative’ head). The latter provides a standard of comparison containing a universal quantifier.<sup>10</sup> The meaning of a superlative can then be described as in (31), with X a property.

- (31) more X than all others (X = a property)

On the basis of this structure, the use of *was* can be attributed to the presence of a universal quantifier in the internal structure of superlatives. Specifically, the strong preference for *was* in connection with nominalized superlatives follows if the relative clause standardly modifies the universal quantifier located in the superlative category (recall that *alles* (almost) obligatorily selects *was* as a relativizer, cf. Section 2. above) as illustrated by means of the paraphrase in (32).

- (32) *das Beste*, *was ich kenne* = ‘etwas, das besser ist als [alles (andere), the best what I know ‘some X which is better than all (others) [was ich kenne]]’  
 that I know’

In (32), the relative clause provides the lexical restriction for the universal quantifier. Asking why the relative clause attaches to the universal quantifier (and not to NP/DP), we note that higher attachment (to NP or DP) does not appear to yield

10. In languages like Russian, this meaning is transparently coded in the syntax (Bobaljik 2012:61):

(i) positive:            comparative: superlative:  
 xoroš-ij            luč-še            luč-še            vse-go/-x  
 good-MASK.SG better-CMPR better-CMPR all-GEN.SG/GEN.PL

the correct interpretation. For instance, in a construction like *the best that I know*, the relative clause does not serve to single out a best thing from a set of other best things, but rather identifies a best element (i.e., the element which exhibits a certain property to the highest degree) in a set of elements defined or delimited by the (predicate expressed by the) relative clause:<sup>11</sup>

(33) Of all things that I know, X is the best.

According to this analysis, superlatives contain more functional structure characteristic of adjectival elements and are therefore less ‘nominal’ than nominalized positives; note that the presence of superlative morphology is generally taken to be a defining property of adjectives.

#### 4. Semantics/pragmatics and choice between *das* vs. *was*

Beyond the basic generalization that a lexically nominal antecedent triggers relativization by means of *das*, semantic/pragmatic factors can be observed to influence the choice of relativizer under specific circumstances. In cases not already determined by the basic rule, it appears that the choice of *das* vs. *was* may depend on the ontological status of what the antecedent refers to; in a similar vein, we can observe that the use of *das* where there is no nominal antecedent present may have an individuating effect while use of *was* can be characterized as having an overall totalizing effect.

##### 4.1 Reference to objects as opposed to properties or propositional meanings

In (34), reference of *was* in the so-called predicate-nominal function is not to concrete individuals falling under the nominal restriction *Kleinkind* ‘toddler’ but to

---

11. Note that this analysis does not predict that [+masc]/[+fem] nominalizations such as *der Beste* ‘the best.MASC’ trigger relativization by means of *wh*-forms:

- (i) *der Beste, den ich kenne*  
 ‘the best.MASC that I know’

In cases like (i), the lexical restriction of the universal quantifier is furnished by the feature [+person] on the deadjectival noun. Accordingly, examples like (i) can be paraphrased as in (ii). Note as well that the most nearby natural language paraphrase of (ii) in German contains the masculine singular quantifier *jeder* ‘each person’ which obligatorily triggers relativization by means of *d*-pronouns.

- (ii) X is better than anybody I know.

the corresponding property; the former interpretation would be nonsensical, in fact.

- (34) Wie soll sich **ein Kleinkind**, was 4-jährige sind, über einen so langen Zeitraum konzentrieren?  
 How should a toddler, [which is] what 4-year-olds are, concentrate over such a long period?  
 (A08/OKT.08813 St. Galler Tagblatt, 29.10.2008, S. 31; Kinder werden überfordert)

A corpus research in KoGraDB showed an altogether balanced frequency of *das* and *was* respectively as relativizers of *etwas*. *Etwas* can refer to both (particular) individuals as well as to properties or propositions; a close manual investigation revealed that *was* prototypically serves to pick up reference to properties or propositional meanings, while *das* serves to pick up individual reference. (35) gives corpus examples for reference to properties (viz. predicates, 35a) or propositions (35b).

- (35) a. Ich erfuhr, wie wichtig es ist, die Hypotheken der Vergangenheit anzuerkennen, überhaupt einen Gaumen für die Bedeutung von Vergangenheit zu zeigen – **etwas**, was mein literarisches Vorbild nicht tat, nicht tun konnte.  
 ‘I learned how important it is to appreciate the mortgages of the past, to show a palate for the meaning of the past – something that [what] my literary idol neither did nor could do.’  
 (Siegfried Lenz: Mein Vorbild Hemingway. In: Werkausgabe in Einzelbänden, Bd. 19. Hamburg, 1997)
- b. Also war da **etwas**, was ich nicht wissen soll?  
 ‘So, was there something that [what] I should not know?’  
 (Rolf F. Schütt: Die Irren sind auch nicht mehr die einzig Normalen. Oberhausen, 1997)

The raw numbers of the survey are given in Table 4; statistical evaluation reveals that selection of *das* vs. *was* depends in a manner that is highly significant on the way of referring ( $p = 1.774e-07$ , Cramer’s  $V = 0,304$ ).

**Table 4.** Impact of the reference of *etwas* ‘something’ on the distribution of *das/was*

	<i>Etwas, das</i>	<i>Etwas, was</i>
Total number of cases	141	154
Property/proposition reference	12	53
object reference	129	101

Antecedents like *dasselbe* or *das gleiche* ‘the same’ that are ambiguous in the same way as *etwas* lead to analogous results, supporting the conclusion that *das* ranges over individuals while *was* ranges over properties.

#### 4.2 Particularization by means of *das* vs. totalization by means of *was*

According to our analysis, *das* and *was* form what is known as a ‘Horn-scale’ as the possible interpretations of *was* subsume those of *das*. Accordingly, use of *was* may give rise to a conversational implicature that the speaker is not in a position to assert the stronger (more specific, more exclusive) meaning that is associated with *das* (cf. e.g. Horn 2000, 306). The effect is illustrated in the following contrasting examples. In (36), the reference of *das*, *das* is restricted to pictures, unlike the reference of *das*, *was* in (37) that is less restricted.<sup>12</sup>

(36) Das Bild, das Peter gekauft hat, war teurer als **das**, **das** Maria gekauft hat.  
 ‘The picture that Peter bought was more expensive than the picture that Mary bought.’

(37) Das Bild, das Peter gekauft hat, war teurer als **das**, **was** Maria gekauft hat.  
 ‘The picture that Peter bought was more expensive than the thing(s)/stuff that Mary bought’

(36’) and (37’) sketch the analysis of the contrast in the by now familiar terms: in (36), the relative clause modifies a nominal antecedent, while in (37) it combines directly with the determiner element.

(36’) ... als [**das Bild**, [**das** Maria gekauft hat]]

(37’) ... als [**das**, [**was** Maria gekauft hat]]

In support, it can be observed that the use of *das* has an individualizing/particularizing effect on the interpretation of a nominalized adjective (Sanders 1879, 279f., Cutting 1902, Curme 1922, Behaghel 1928). In contrast, the use of *was* has a generalizing effect, leading to an interpretation of the deadjectival nouns in terms of a general property, or a totality/collection of things. Sanders (1879, 279) gives the example in (38), commenting that *das Böse* ‘the evil’ signifies a whole class in general, a totality of rigors (= *alles (das) Böse* ‘all (that) evil’), and therefore triggers the generalizing *was* as relative pronoun. In contrast, *das eine Gute* ‘the single good (thing)’ is a certain good deed, which is reflected by the particularizing relative pronoun *das* or *welches*.

12. Duden (2009, 1049) singles out the former as an elliptical use, see also (16) above.

(38) Ich verzeihe ihm **das Böse**, **was** er mir zugefügt hat und künftig noch zufügen wird, in dankbarer Erinnerung an **das eine Gute**, **das** (welches) er mir früher erwiesen hat.

'I forgive him the evil [deeds] that [what] he did and will do to me in grateful memory of the single good [thing] that (which) he did to me earlier.'

Corroborating these observations, adding the totalizing element *alles* 'all, every' to a nominalized positive significantly increases the rate of relativization by means of *was*; (39) gives a representative example; the numbers in Table 5 show that the addition of *alles* to a nominalized adjective correlates with increased use of the relativizer *was* (cf. again Section 2 above as well as Section 3.2.3)

(39) Für den Mundart-Dichter verkörpern die Früchte **alles Gute**, **was** einem im Leben so passieren kann. Denn Zwetschgen bedeuten Glückseligkeit.  
To the dialect poet the fruit represent all good [things] that [what] may happen to you in life, since plums mean happiness.'  
(NUN12/NOV.00444 Nürnberger Nachrichten, 05.11.2012, S. 37; Bald regnet es Zwetschgä – Dialekt-Dichter Fitzgerald Kusz stellt seinen neuen Lyrikband vor)

**Table 5.** Impact of *alles* 'all' on the relative frequency of *das* vs. *was* with nominalized positives ( $p < 2.2e-16$ , Cramér's  $V = 0.344$ )

	<i>Das</i>	<i>was</i>
( <i>das, vieles</i> ) <i>Gute/Schöne/Neue</i>	681 (84.6%)	124 (15.4%)
<i>alles Gute/Schöne/Neue</i>	96 (56.5%)	74 (43.5%)

Interestingly, a similar effect can be observed in connection with mass nouns, which in more of 99% of the cases require relativization by means of *das* (cf. footnote 4 above). However, when the mass noun is modified by the universal quantifier *alles* (e.g., *alles Wasser/Geld* etc. 'all water/money' etc.), the frequency of *was* drops to 80%:

**Table 6.** Impact of *alles* 'all' on the relative frequency of *das* vs. *was* with mass nouns ( $p < 2.885e-16$ , Cramér's  $V = 0.262$ )

	<i>Das</i>	<i>was</i>
<i>Geld, Wasser</i> etc.	5,297 (99.3%)	38 (0.7%)
<i>alles Geld, Wasser</i> etc.	329 (80%)	82 (20%)

Interestingly, and showing the connection to superlatives again, modification by *einzig* 'only' as implying uniqueness yields an analogous effect.

That the qualitative difference between *das* and *was* can be used by the speaker to achieve certain communicative effects was noted as well by Curme (1922, 199), who similarly points to something like an individuating or particularizing effect associated with the use of *das*:

It is possible that there is often here an intentional use of **das** or **welches** by way of differentiation, to refer to something definite, definite at least to the speaker. [...] We cannot, however, in many cases on account of the lack of clearness in the thought absolutely determine whether the **das** or **welches** is used merely as a survival of older usage to indicate a collective idea or something indefinite or general, or is employed intentionally in accordance with modern usage elsewhere, to refer to something definite.

## 5. Concluding summary

We have argued that the alternation between the relativizers *das* and *was* reflects categorial properties of the antecedent of the relative clause (Brandt and Fuß 2014):

- *das* is inserted in the presence of a lexical head noun (characterized by specified gender features on *N*)
- *was* is the underspecified elsewhere case

Cases where *das* is used in the absence of an overt nominal typically turn out to be cases of ellipsis or can be attributed to the presence of lexical gender features on the head of the relative clause as in the case of certain indefinites and quantifiers (e.g. *jedes* ‘each’, *keines* ‘none’).

Regarding deadjectival nouns, we noted that three cases must be distinguished: For one, adjectives that modify silent (viz. elided) nouns go with *das* no matter what. Second, nominalized positives allow both *das* and *was* due to their mixed categorial status. On top of this, the distinction between *d*- and *wh*-morphology can be used to express subtle semantic distinctions (e.g., individuation using *das*). Third, nominalized superlatives select *was* which according to the analysis presented combines with a silent counterpart of the quantifier *alles* that is part of the superlative structure.

We have reviewed evidence that beyond the basic generalization, the variation between *das* vs. *was* points to semantic and pragmatic distinctions related to the question of what it takes to be a noun. In the domain investigated here, the crucial distinction is that between ‘ordinary individuals’ going with *das* and everything else, in particular, property instantiations and propositional meanings going with *was*.

## Acknowledgements

We wish to thank two anonymous reviewers for their insightful and helpful comments as well as the audience of NWASV2. In addition, we want to express our gratitude to a number of colleagues at the Institut für Deutsche Sprache in Mannheim and elsewhere: Hardarik Blühdorn, Fabian Heck, Franziska Münzberg, Anna Volodina, Angelika Wöllstein, and especially Bernd Wiese.

## References

- Alexiadou, Artemis. 2011. "Adjectival nominalizations: qualities and properties". Paper presented at the *Workshop on Nounhood and Adjectivehood*, Barcelona, March 23–24th 2011.
- Alexiadou, Artemis. 2015. "Encoding properties: The case of English 'nominalized' adjectives". Paper presented at *Roots IV*, NYU, June 29, 2015.
- Bayer, Josef and Eleonore Brandner. 2008. "On wh-head-movement and the doubly-filled-comp filter". In *Proceedings of the 26th West Coast Conference on Formal Linguistics*, ed. by Charles B. Chang, and Hannah J. Haynie, 87–95. Somerville: Cascadilla Proceedings Project.
- Behaghel, Otto. 1928. *Deutsche Syntax. Eine geschichtliche Darstellung. Band 3: Die Satzgebilde*. Heidelberg: C. Winter.
- Benveniste, Emile. 1950. "La phrase nominale". *Bulletin de la Société Linguistique de Paris* 46: 19–36.
- Benveniste, Emile. 1966. *Problèmes de linguistique générale*. Paris: Editions Gallimard.
- Bierwisch, Manfred. 1967. "Syntactic features in morphology: general problems of so-called pronominal inflection in German". In *To Honor Roman Jakobson: Essays on the Occasion of His Seventieth Birthday*, 239–270. The Hague: Mouton.
- Blevins, James P. 1995. "Syncretism and Paradigmatic Opposition". *Linguistics and Philosophy* 18: 113–152. <https://doi.org/10.1007/BF00985214>
- Bobaljik, Jonathan. 2012. *Universals in Comparative Morphology*. Cambridge, MA: The MIT Press.
- Boef, Eefje. 2012. *Doubling in Relative Clauses. Aspects of Morphosyntactic Microvariation in Dutch*. Utrecht: LOT.
- Brandt, Patrick, and Eric Fuß. 2014. "Most questionable pronouns: Variation between *das*- vs. *was*-relatives in German". *Linguistische Berichte* 239, 297–329.
- Brandt, Patrick, and Eric Fuß. 2016. Relativpronomenselektion und grammatische Variation: *was* vs *das* . in *attributiven Relativsätzen*. Ms., IDS Mannheim.
- Broekhuis, Hans, and Evelien Keizer. 2012. *Syntax of Dutch. Nouns and Noun Phrases. Volume 1*. Amsterdam: Amsterdam University Press.
- Citko, Barbara. 2004. "On headed, headless, and light-headed relatives". *Natural Language and Linguistic Theory* 22: 95–126. <https://doi.org/10.1023/B:NALA.000005564.33961.e0>
- Curme, George O. 1922. *A Grammar of the German Language. Second revised edition*. [Ninth printing 1964]. New York: Ungar.

- Cutting, Starr Willard. 1902. "Concerning the Modern German relatives, „das“ and „was“, in clauses dependent upon substantivized adjectives." *The Decennial Publications of the University of Chicago*, Vol. VII, 113–131. Chicago: The University of Chicago Press.
- Duden. 2016. *Die Grammatik*. 9th edition. Edited by Angelika Wöllstein, and the Duden editorial staff. Mannheim/Leipzig/Wien/ Zürich: Dudenverlag.
- Fuß, Eric. 2017. „Relativierungsverhalten und syntaktische Kategorie substantivierter Adjektive“. In *Probleme der syntaktischen Kategorisierung: Einzelgänger, Außenseiter und mehr*, ed. by S. Döring, and J. Geilfuß-Wolfgang. Tübingen: Stauffenburg.
- Grewendorf, Günther. 2012. "Wh-movement as topic movement". In *Functional Heads: The Cartography of Syntactic Structures*, vol. 7, ed. by Laura Brugé, Anna Cardinaletti, Giuliana Giusti, Nicola Munaro, and Cecilia Poletto, 55–68. Oxford: Oxford University Press. <https://doi.org/10.1093/acprof:oso/9780199746736.003.0004>
- Halle, Morris, and Alec Marantz. 1993. "Distributed Morphology and the pieces of inflection". In *The View from Building 20*, ed. by Kenneth Hale, and Samuel J. Keyser, 111–176. Cambridge: The MIT Press.
- Halle, Morris. 1997. "Distributed Morphology: Impoverishment and Fission". In *MIT Working Papers in Linguistics 30: PF: Papers At the Interface*, ed. by B. Bruening, Y. Kang, and M. McGinnis, 425–450. Cambridge, Mass.: Department of Linguistics and Philosophy, MIT.
- Harley, Heidi, and Elizabeth Ritter. 2002. "Structuring the bundle: A universal morphosyntactic feature geometry." In *Pronouns – grammar and representation*, ed. by Horst J. Simon, and Heike Wiese, 23–39. Amsterdam: John Benjamins. <https://doi.org/10.1075/la.52.05har>
- Heck, Fabian, and Juan Cuartero. 2011. "Long distance agreement in relative clauses." In *Local Modelling of Non-Local Dependencies in Syntax*, ed. by A. Alexiadou, T. Kiss, and G. Müller, 49–83. Berlin: de Gruyter.
- Holler, Anke. 2005. *Weiterführende Relativsätze. Empirische und theoretische Aspekte*. Berlin: Akademie Verlag.
- Horn, Laurence R. 2000. "From IF to IFF: Conditional perfection as pragmatic strengthening." *Journal of Pragmatics* 32: 289–326 [https://doi.org/10.1016/S0378-2166\(99\)00053-3](https://doi.org/10.1016/S0378-2166(99)00053-3)
- Kester, Ellen-Petra. 1996a. *The nature of adjectival Inflection*. PhD dissertation, Utrecht University.
- Kester, Ellen-Petra. 1996b. "Adjectival inflection and the licensing of empty categories in DP." *Journal of Linguistics* 32 (1): 57–78. <https://doi.org/10.1017/S0022226700000761>
- Kiparsky, Paul. 1973. "‘Elsewhere’ in phonology". In *A Festschrift for Morris Halle*, ed. by S. Anderson, and P. Kiparsky, 93–106. New York: Holt, Rinehart and Winston.
- Kiparsky, Paul. 1982. "Word-formation and the lexicon". In *Proceedings of the 1982 Mid-America Linguistics Conference*, ed. by F. Ingemann. University of Kansas.
- Murelli, Adriano. 2012. "Das Geheimnis, das oder was du mir verraten hast? – Das oder was als Relativpronomen". In *Grammatische Stolpersteine digital. Festschrift für Bruno Strecker zum 65. Geburtstag*, ed. by M. Konopka, and R. Schneider, 145–152. Mannheim: Institut für Deutsche Sprache.
- Sanders, Daniel. 1879. *Deutsche Sprachbriefe*. Berlin: Langenscheidt.
- Sleeman, Petra. 2013. "Deadjectival human nouns: conversion, nominal ellipsis, or mixed category?" *Linguística: revista de estudos linguísticos da Universidade do Porto* 8: 159–180.



- Wiese, Bernd. 1999. "Unterspezifizierte Paradigmen. Form und Funktion in der pronominalen Deklination". *Linguistik Online* 4 ([http://www.linguistik-online.de/3\\_99](http://www.linguistik-online.de/3_99))
- Wiese, Bernd. 2013. *Relativpronomina: Flexion und Wortfelder*. Ms., IDS Mannheim.
- Zeijlstra, Hedde. 2012. "There is only one way to agree". *The Linguistic Review* 29: 491–539. <https://doi.org/10.1515/tlr-2012-0017>
- Zeijlstra, Hedde. 2013. *Upward Agree is superior*. Ms., University of Amsterdam.

*Authors' addresses*

Patrick Brandt  
Institut für Deutsche Sprache  
R5 6-13  
68161 Mannheim  
Germany

[brandt@ids-mannheim.de](mailto:brandt@ids-mannheim.de)

Eric Fuß  
Institut für Deutsche Sprache  
R5 6-13  
68161 Mannheim  
Germany

[fuss@ids-mannheim.de](mailto:fuss@ids-mannheim.de)